



Collegiate Elementary School

Address: 49 Collegiate Avenue **Bell Time:** 8:45 AM - 3:05 PM
City: Stoney Creek, ON **Postal Code:** L8G 3L5

Year Built: 1954; 2021 (Addition) **OTG*:** 495
Site Size: 5.71 Acres **Portable Count:** 0
Building sq ft: 51,882 **Portable Capacity:** 0 pupils
Site Portable Capacity:** 6 **Total Capacity:** 495 pupils

Available Programs: English
Grade Configuration: JK - 8 **French Immersion:** N/A

Before and After Care Program Provider: Today's Family Child Care
Building/Amenity Partners: Green Space

Enrolment Projections:

Collegiate	JK	SK	1	2	3	4	5	6	7	8	Total	Utilization	Utilization with Portables
2021	43	50	32	41	34	35	43	40	45	47	410	83%	-
2022	52	50	45	35	42	39	38	48	45	44	438	88%	-
2023	52	55	43	51	36	40	39	40	48	44	448	91%	-
2024	51	61	56	48	57	37	48	42	42	50	492	99%	-
2025	51	56	55	59	49	57	37	49	42	42	498	101%	-
2026	51	56	51	58	60	49	57	38	49	42	512	103%	-
2027	51	56	53	53	58	60	49	58	38	49	527	106%	-
2028	51	56	54	56	54	58	60	49	59	38	536	108%	-
2029	51	51	54	54	56	54	58	60	49	59	547	111%	-

*OTG: On The Ground Capacity: Ministry of Education rated capacity of a school building

**Site Portable Capacity: Number of portables the school site can generally accommodate without capital investment and improvements.



HWDSB

HWDSB Properties and Adjacent City Facilities

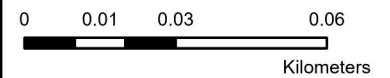
Collegiate Avenue Elementary School

49 Collegiate Avenue
Stoney Creek, Ontario



-  School Property
-  City Facility

HWDSB Acres	City Owned Acres
5.71 +/-	1.36 +/-





Eastdale Elementary School

Address: 99 Lincoln Road **Bell Time:** 9:15 AM - 3:35 PM
City: Stoney Creek, ON **Postal Code:** L8E 1Z4

Year Built: 2020 **OTG*:** 565
Site Size: 4.28 Acres **Portable Count:** 12
Building sq ft: 56,586 **Portable Capacity:** 276 pupils
Site Portable Capacity:** 12 **Total Capacity:** 841 pupils

Available Programs: English, French Immersion
Grade Configuration: JK - 8 **French Immersion:** Gr. 1-8

Before and After Care Program Provider: Umbrella Child Care

Building/Amenity Partners: Eastdale Park, Baseball Diamonds, Play Structure

Enrolment Projections:

Eastdale	Program	JK	SK	1	2	3	4	5	6	7	8	Total	Utilization	Utilization
2021	English	73	68	44	39	70	73	35	49	50	64	565	130%	87%
	French Immersion	0	0	37	34	21	17	17	15	16	13	170		
	Total	73	68	81	73	91	90	52	64	66	77	735		
2022	English	66	76	56	47	47	65	79	43	59	52	590	139%	94%
	French Immersion	0	0	40	37	34	22	15	17	18	14	197		
	Total	66	76	96	84	81	87	94	60	77	66	787		
2023	English	72	76	50	57	52	48	68	92	49	61	625	151%	101%
	French Immersion	0	0	46	42	36	35	23	14	14	16	226		
	Total	72	76	96	99	88	83	91	106	63	77	851		
2024	English	77	76	61	53	55	48	52	66	90	46	624	153%	103%
	French Immersion	0	0	35	46	42	36	32	23	11	14	239		
	Total	77	76	96	99	97	84	84	89	101	60	863		
2025	English	72	81	67	64	53	55	49	54	66	90	655	159%	107%
	French Immersion	0	0	23	33	46	42	36	32	22	11	245		
	Total	72	81	91	97	99	97	85	86	88	101	900		
2026	English	72	74	72	69	64	53	57	50	54	66	632	157%	106%
	French Immersion	0	0	23	23	33	46	42	36	32	22	257		
	Total	72	74	94	92	97	99	99	86	86	88	889		
2027	English	73	74	62	73	69	65	54	57	51	55	632	157%	106%
	French Immersion	0	0	23	23	23	33	46	42	36	32	258		
	Total	73	74	85	96	92	98	100	99	87	87	890		
2028	English	73	74	63	63	74	69	65	54	57	51	641	157%	106%
	French Immersion	0	0	23	23	23	23	33	46	42	36	248		
	Total	73	74	85	85	96	92	98	100	99	87	890		
2029	English	73	74	63	63	63	74	69	65	54	57	653	157%	106%
	French Immersion	0	0	23	23	23	23	23	33	46	42	235		
	Total	73	74	85	85	85	96	92	98	100	99	888		

*OTG: On The Ground Capacity: Ministry of Education rated capacity of a school building

**Site Portable Capacity: Number of portables the school site can generally accommodate without capital investment and improvements.



HWDSB

HWDSB Properties and Adjacent City Facilities

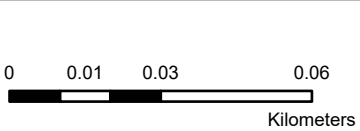
Eastdale Elementary School

99 Lincoln Road
Stoney Creek, Ontario



- School Property
- City Facility

HWDSB Acres	City Owned Acres
4.28 +/-	10.57 +/-



**Eastdale Park,
Baseball Diamonds,
Play Structure**

Eastdale



Lake Avenue Elementary School

Address: 157 Lake Ave North **Bell Time:** 8:50 AM - 3:10 PM
City: Hamilton, ON **Postal Code:** L8E 1L5

Year Built: 1952 **OTG*:** 516
Site Size: 9.08 Acres **Portable Count:** 9
Building sq ft: 58,534 **Portable Capacity:** 207 pupils
Site Portable Capacity:** 10 **Total Capacity:** 723 pupils

Available Programs: English
Grade Configuration: JK - 8 **French Immersion:** N/A

Before and After Care Program Provider: Wesley Child Care

Building/Amenity Partners: Riverdale Community Rec Centre, Wesley Riverdale EarlyON

Enrolment Projections:

Lake Ave	JK	SK	1	2	3	4	5	6	7	8	Total	Utilization	Utilization with Portables
2021	53	72	60	44	61	50	60	55	44	58	557	108%	77%
2022	68	61	74	65	56	68	54	71	59	48	624	121%	86%
2023	66	71	62	74	69	63	76	57	72	58	668	129%	92%
2024	67	76	75	73	77	65	71	80	59	79	722	140%	100%
2025	67	74	80	75	74	77	66	72	82	59	727	141%	101%
2026	67	74	78	80	75	74	79	66	72	82	747	145%	103%
2027	67	70	74	78	80	75	74	79	66	72	736	143%	102%
2028	67	70	71	74	78	80	75	74	79	66	735	142%	102%
2029	67	71	71	71	75	78	81	75	75	79	744	144%	103%

*OTG: On The Ground Capacity: Ministry of Education rated capacity of a school building

**Site Portable Capacity: Number of portables the school site can generally accommodate without capital investment and improvements.

HWDSB Properties and Adjacent City Facilities

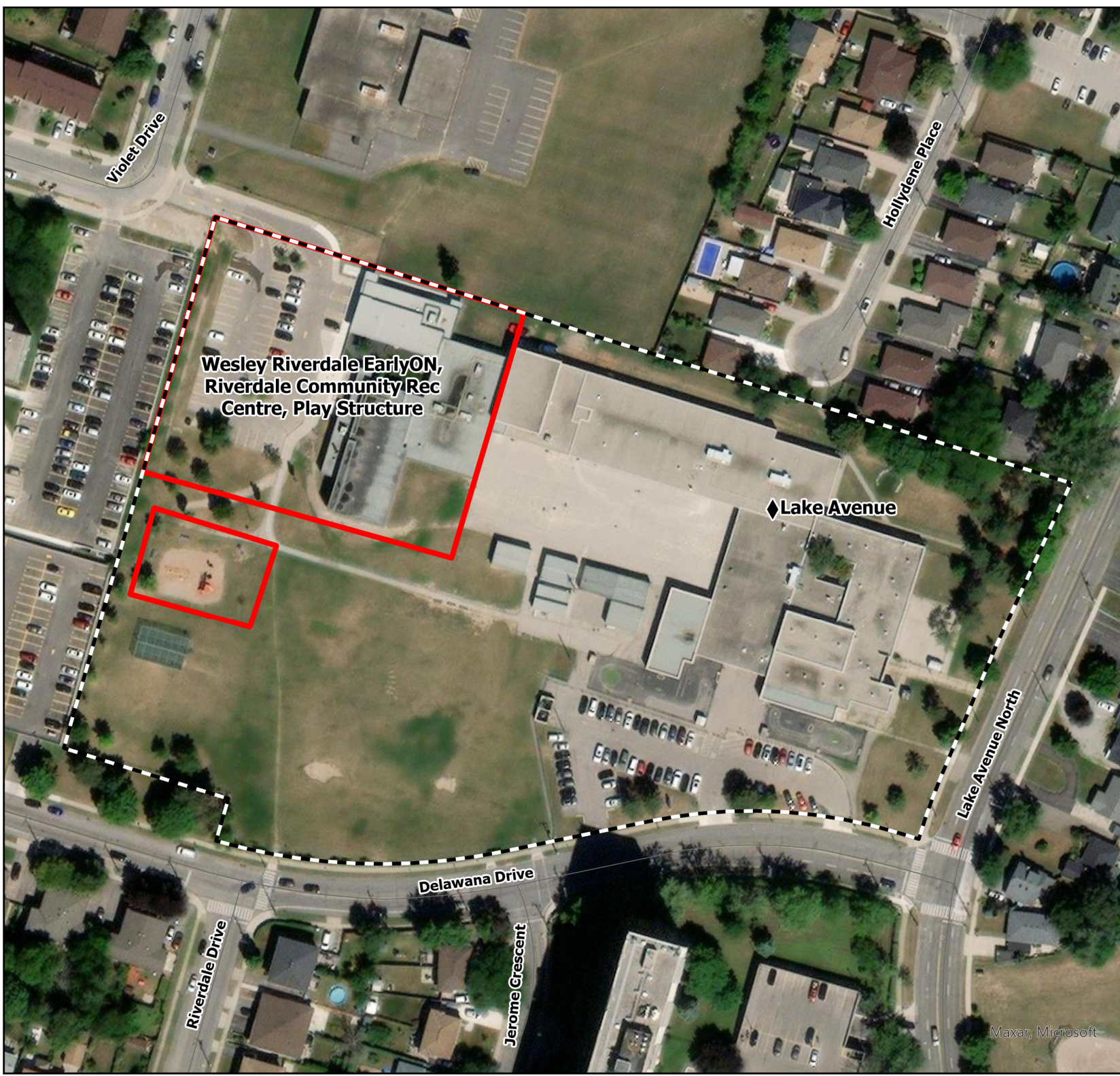
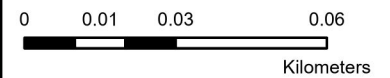
Lake Avenue Elementary School

157 Lake Avenue North
Hamilton, Ontario



-  School Property
-  City Facility

HWDSB Acres	City Owned Acres
9.08 +/-	0 +/-



South Meadow Elementary School



HWDSB

Address: 23 Royce Avenue **Bell Time:** 8:20 AM - 2:40 PM
City: Hamilton, ON **Postal Code:** L8G 4C9

Year Built: 2021 **OTG*:** 495
Site Size: 6.34 Acres **Portable Count:** 4
Building sq ft: 55,441 **Portable Capacity:** 92 pupils
Site Portable Capacity:** 7 **Total Capacity:** 587 pupils

Available Programs: English **French Immersion:** N/A
Grade Configuration: JK - 8

Before and After Care Program Provider: Umbrella Child Care
Building/Amenity Partners: None

Enrolment Projections:

South Meadow	JK	SK	1	2	3	4	5	6	7	8	Total	Utilization	Utilization with Portables
2021	43	58	54	61	55	54	50	50	65	53	543	110%	93%
2022	55	52	68	57	64	71	55	54	57	72	605	122%	103%
2023	59	54	59	65	56	70	69	58	52	56	598	121%	102%
2024	52	62	50	57	65	54	71	68	61	53	593	120%	101%
2025	53	54	63	50	57	65	54	71	68	61	596	120%	102%
2026	54	55	55	63	50	57	65	54	71	68	592	120%	101%
2027	55	56	56	55	63	50	57	65	54	71	582	118%	99%
2028	55	55	57	56	55	63	50	57	65	54	567	115%	97%
2029	55	55	56	57	56	55	63	50	57	65	569	115%	97%

*OTG: On The Ground Capacity: Ministry of Education rated capacity of a school building

**Site Portable Capacity: Number of portables the school site can generally accommodate without capital investment and improvements.



HWDSB

*HWDSB Properties
and Adjacent City
Facilities*

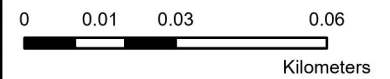
South Meadow Elementary School

23 Royce Avenue
Stoney Creek, Ontario



- School Property
- City Facility

HWDSB Acres	City Owned Acres
6.34 +/-	0 +/-



Winona Elementary School



HWDSB

Address: 301 Lewis Road **Bell Time:** 8:40 AM - 3:00 PM
City: Stoney Creek, ON **Postal Code:** L8E 5H1

Year Built: 2011 **OTG*:** 761
Site Size: 8.16 Acres **Portable Count:** 6
Building sq ft: 72,278 **Portable Capacity:** 138 pupils
Site Portable Capacity:** 9 **Total Capacity:** 899 pupils

Available Programs: English
Grade Configuration: JK - 8 **French Immersion:** N/A

Before and After Care Program Provider: Umbrella Child Care
Building/Amenity Partners: Proposed Park Land

Enrolment Projections:

Winona	JK	SK	1	2	3	4	5	6	7	8	Total	Utilization	Utilization with Portables
2021	78	77	67	81	90	85	111	93	111	110	903	119%	100%
2022	86	91	73	78	84	86	87	110	98	107	900	118%	100%
2023	102	100	95	79	84	87	89	93	107	100	936	123%	104%
2024	74	99	90	98	86	88	82	88	99	108	912	120%	101%
2025	84	78	95	93	102	86	88	82	88	99	894	118%	99%
2026	85	89	76	99	97	103	87	89	83	89	898	118%	100%
2027	89	93	89	81	104	101	106	91	93	87	933	123%	104%
2028	93	97	94	96	87	109	105	111	95	97	984	129%	110%
2029	96	101	97	100	101	91	112	109	114	98	1019	134%	113%

*OTG: On The Ground Capacity: Ministry of Education rated capacity of a school building

**Site Portable Capacity: Number of portables the school site can generally accommodate without capital investment and improvements.

HWDSB Properties and Adjacent City Facilities

Winona Elementary School

301 Lewis Road
Winona, Ontario



-  School Property
-  City Facility

HWDSB Acres	City Owned Acres
8.16 +/-	5.85 +/-

